

B&W Production Printer

# RICOH Pro 8210s/8220s/ 8210/8220

Printer  Copier  Facsimile  Scanner



Pro  
8210s/8210

111  
ppm monochrome

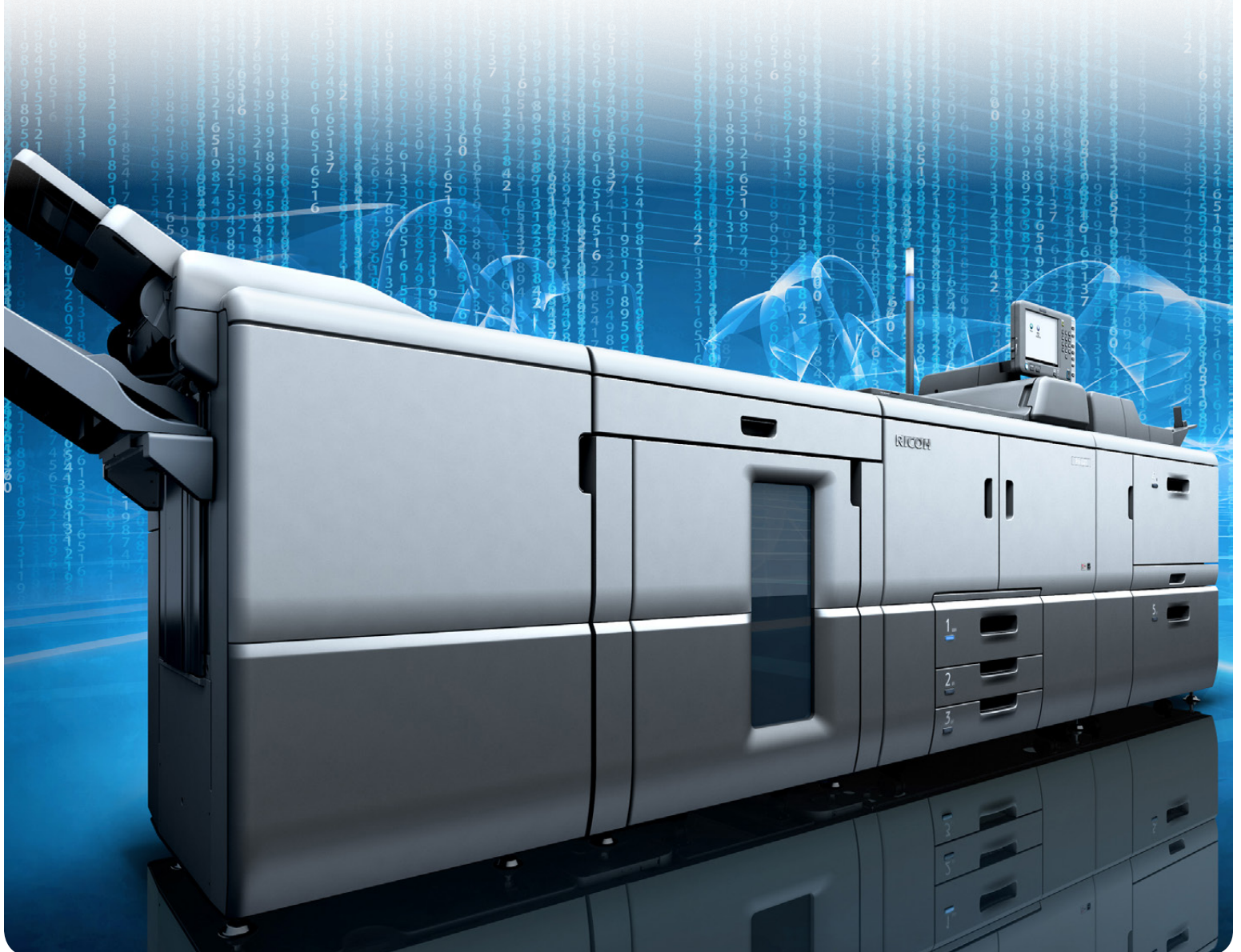
Pro  
8220s/8220

136  
ppm monochrome

# It's never been easier to grow your print business

Simplify the way you print with superior performance from the RICOH® Pro 8210s/8220s multifunction production printer or RICOH Pro 8210/8220 production printer. Deliver high-speed black-and-white documents and give your customers more print options so you can capture more of their business. Impress with high-quality newsletters, advertisements, bulletins, direct mail and much more on diverse media, including thicker paper stocks and larger sizes. Choose from multiple automated finishers to give every document a polished, professional look. Create automated shortcuts and utilize preconfigured settings quickly to save time. Change consumables and make adjustments on the fly. And do it all with intuitive controls that help you simplify the most complex workflows and meet the tightest deadlines.

- Produce black-and-white documents at up to 136 ppm
- Create compelling output with image resolution up to 1200 x 4800 dpi
- Print on media, including heavy and textured stock, up to 13" x 19.2"
- Send information electronically via several scan-to capabilities
- Expand paper capacity up to 12,650 sheets to extend print runs
- Automate finishing to produce professional results in less time



## Meet more deadlines, realize more opportunities

Simplify high-volume, low-stress production printing

### Let productivity lead to profitability

Use the Pro 8200 Series to print up to 136 pages per minute and meet more deadlines — so you can capture more revenue-generating opportunities. Add optional paper trays for up to nine types of media and 12,650 sheets total paper capacity to target more types of customers and jobs. Reload toner and media on the fly with dual toner cartridges and Active Tray Indicator lights. Keep tabs on system status from anywhere on the production floor via the Operator Call Light. Trained Customer Replaceable Units (TCRUs) provide all the necessary critical components on-site for easy replacement without service technician support.



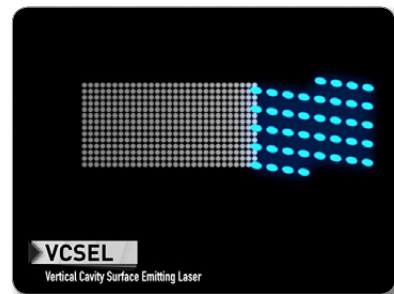
### Get innovative with more media choices

Choose from a wide range of media options to make your documents stand out. Print at sizes up to 13" x 19.2" for closer views of manuals and drawings. Use heavily-coated stocks up to 350 g/m<sup>2</sup> for attention-grabbing direct mail, postcards, brochures, newsletters and more. Quickly set up and print up to 13" x 27.5" uncoated book covers and composites with the optional Multi Bypass Banner Sheet Tray. Take advantage of standard support for No-Carbon Required (NCR) paper to keep production of this important workflow in-house. You can also print checks with the magnetic ink character recognition (MICR) option to expand your client list even more. It uses Rosetta's patented dual component ProMark™ 8100 MICR toner and optimized E-13B and CMC-7 MICR fonts to stand up to the punishment of dozens of passes through high speed reader-sorter machines.



### Create with clarity

Impress your customers with extremely high-quality output at up to 1200 x 4800 dpi resolution. The Pro 8200 Series uses more granular toner particles, so you can create photo-like images with smoother gradations and halftones. The system also delivers consistent front-to-back registration for precise alignment from the first print to the last on books, manuals, directories, brochures, postcards and other documents.



# More features to manage more types of jobs

- 1 HCI3500 Plockmatic High Capacity Interposer (Optional):** Feed pre-printed sheets from two sources for front and back covers. Insert a wide range of offset, color or coated paper up to 350 g/m<sup>2</sup> within a single booklet automatically. Take advantage of two trays with 3,500-sheet total paper capacity for extended runs with multiple paper stocks.
- 2 SR5050 3,000-Sheet Staple Finisher (Optional):** Perform up to 100-sheet stapling for documents up to 13" x 19.2". Add flexibility with the optional Hole Punch Unit.
- 3 SR5060 2,500-Sheet Booklet Finisher (Optional):** Use the in-line Booklet Finisher, as well as an optional Booklet Trimmer Unit or Hole Punch Unit, to produce stapled and saddle-stitched booklets cost-effectively.
- 4 DU5050 Decurl Unit (Optional):** Reduce paper curling for more accurate stacking and greater throughput.
- 5 220-Sheet Automatic Document Feeder (Pro 8210s/8220s only):** Expedite copy and scan jobs with single-pass color duplex scanning up to 220 images per minute.
- 6 BY5010 Multi Bypass Tray (Optional):** Add up to 550 sheets of unique stocks and sizes. Produce banners, included on uncoated paper, up to 13" x 27.5" with an optional Multi Bypass Banner Sheet Tray.
- 7 Full-Color, 10.4" SVGA Control Panel:** Perform everyday print tasks with ease and customization and transition from job to job quickly from the post-mounted, intuitive touch screen.
- 8 Operator Call Light:** Find out instantly from anywhere in the print center the moment the printer's status changes.
- 9 VCSEL and Granular Toner Technology:** Produce more vivid prints and smoother gradations for improved text, fine lines, graphics and photographic reproductions via Vertical Cavity Surface Emitting Laser and more uniform toner.
- 10 Heavy Media Support:** Produce 13" x 19.2" output with heavy media (up to 130 lb. Cover through the RT5100 LCIT) to expand in-house production deliverables.
- 11 Paper Trays:** Perform longer runs with tandem 2 x 1,100-Sheet Paper Trays and two 550-Sheet Paper Trays for a standard total paper capacity of 3,300 sheets. Add optional paper sources to expand capacity to 12,650 sheets.



RICOH Pro 8220s

- 12 Active Tray Indicators:** See which tray is in use quickly, so you can refill other paper sources without interrupting print jobs.
- 13 SK5030 High-Capacity Stacker (Optional):** Use the 5,000-Sheet Stacker to run longer unattended jobs. Move large volumes of output to off-line binding, packing and shipping quickly via the rollaway cart. Lock the stacker door when printing confidential documents.
- 14 TK5010 A3/DLT Tray Kit (Optional):** Expand paper capacity for larger sizes without taking up too much space by converting a standard paper drawer to an 11" x 17" drawer.
- 15 RT5100 Vacuum Feed Large Capacity Input Tray (Optional):** Support a wider range of media with a three-belt air-delivery system and feed coated papers from 40 – 350 g/m<sup>2</sup> with speed and accuracy. Add an optional BU5010 Bridge Unit and two 4,400-Sheet Vacuum Feed LCTs to maximize total paper capacity at 12,650 sheets.

- Energy Efficiency:** Perform tasks using less energy. The device is ENERGY STAR® certified and meets EPEAT® Gold\* criteria to help minimize operating costs while reducing environmental impact.  
\*EPEAT Rating is applicable only in the USA.
- Versatile Controller Support:** Use the standard print controller to perform everyday print and workflow tasks quickly. Take advantage of PCL5e/6 as standard PDL support and optional genuine Adobe PostScript 3 and genuine IPDS to integrate seamlessly into almost any host environment with incredible reliability and page-recovery capabilities.
- Fiery® EB-34 Controller (Optional):** Execute end-to-end automated workflows and simplify advanced print management to expand production printing. Based on EFI's popular Fiery Server technology, this digital front end (DFE) controller offers more capabilities including Advanced Job Re-order and Tab Inserts. Plus, you can integrate its Paper Catalog feature with the MFP or printer's Paper Library function to instantly synchronize a print job's custom paper settings.



To view detailed features of our B&W production products online go to [www.ricoh-usa.com/products](http://www.ricoh-usa.com/products)



# Make a big production out of productive printing

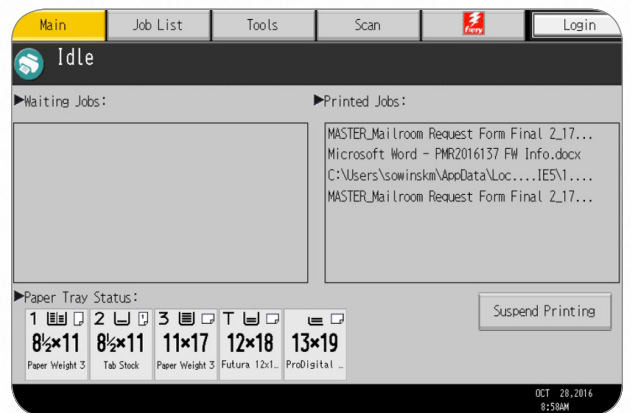
## Transition to digital quickly

Use the Pro 8210s/8220s multifunction production printer/copier/scanner to transform hardcopy documents into digital files and share them instantly right from the control panel. Scan two-sided documents at up to 220 images per minute and send them via Scan-to-Email, FTP, PDF, URL and other scan-to options so your clients can preview prints instantly or receive important information for faster, smarter decision-making. Or, you can scan files to a USB or SD card and deliver the files to your clients directly for greater mobility.



## Control workflows to simplify workloads

Now you can focus more on growing your business instead of setting up print jobs. For example, use preconfigured print settings to automate routine steps. Select frequently run jobs from the device's Document Server instantly to save time. Use the optional Fiery® EB-34 Controller and integrate seamlessly with your Paper Library to access dozens of preset paper settings just as quickly. Plus, you can add RICOH TotalFlow® Prep, Print Manager, Production Manager, Path and BatchBuilder software to automate repetitive tasks, minimize manual touchpoints and simplify workflows for even the most complex commercial, CRD or high-volume print jobs.



## Impress at the finish

Choose from a wide range of options to give every job a polished, professional look while minimizing manual labor, errors and expense. Add automated stapling, saddle-stitching and de-curling to streamline production for booklets, presentations, newsletters, brochures and more. Automate multiple fold options to add another dimension for your direct mail jobs. Use the powerful ring binder for up to 50- to 100-Sheet ring-bound sets or the Plockmatic High Capacity Interposer to add pre-printed inserts from two sources. Take advantage of the RICOH booklet finisher and its limitless output mode, so you can work continuously to maximize revenue opportunities. Or, use RICOH's Peripheral Interface Port (RPIP) to connect with industrial finishing options such as the C.P. Bourg® BM-e Booklet Maker, Duplo DBM-350 Booklet Maker or Watkiss PowerSquare™ 224 Booklet Maker. Additional manufacturer's production finishing devices will also be certified for in-line connection with RICOH's RPIP.



# RICOH Pro 8210s/8220s/8210/8220

## SYSTEM SPECIFICATIONS

### Engine Specifications

<b>Configuration</b>	Console
<b>Standard Modes</b>	Pro 8210s/8220s – Copy/Print/Scan Pro 8210/8220 – Print
<b>Print/Copy Process</b>	Electrostatic transfer with indirect image transfer system
<b>Fusing</b>	Oil-less belt fusing method
<b>System Memory</b>	2GB RAM / 640 GB (320 x 2) HDD
<b>Document Feeder</b>	Standard 220-Sheet ADF with single-pass color duplex scanning (Pro 8210s/8220s only)
<b>Control Panel</b>	Full-color 10.4" SVGA touch panel
<b>Copy Resolution</b>	Up to 1200 x 4800 dpi
<b>Paper Registration</b>	Sensor and Mechanical
<b>Quantity Indicator</b>	1 – 9,999
<b>Original Size</b>	Up to 11" x 17" (297 x 432 mm) (from platen)
<b>Warm-Up Time</b>	Less than 360 sec. (from main switch)
<b>First Copy Speed</b>	Pro 8210s/8210: 5.6 seconds Pro 8220s/8220: 4.6 seconds
<b>Output Speed</b>	Pro 8210s/8210: 111 ppm Pro 8220s/8220: 136 ppm
<b>ADF Speed</b>	Simplex: 120 ipm; Duplex: 220 ipm (B&W or Full-color)
<b>Paper Capacity</b>	Tray 1: 2,200 sheets (1,100 x 2) Trays 2 – 3: 1,100 sheets (550 x 2) Trays 4 – 6 with optional A4/LT LCT: 5,000 sheets Trays 4 – 6 with optional A3/DLT LCT: 4,400 sheets Vacuum-Feed LCIT Trays (optional): 4,400 sheets Bypass Tray: 550 sheets Total Standard Capacity: 3,300 sheets Total Optional Capacity: 12,650 sheets (with RT5100 LCITs)
<b>Limitless Paper Supply</b>	Supported
<b>Paper Size</b>	Tray 1: 8.5" x 11" Trays 2 – 3: 5.5" x 8.5" to 13" x 18" Trays 4 – 6 with optional A4/LT LCT: 5.5" x 8.5" to 8.5" x 11" Trays 4 – 6 with optional A3/DLT LCT: 5.5" x 8.5" to 13" x 19.2" Vacuum-Feed LCIT Trays: 5.5" x 8.5" to 13" x 19.2" Bypass Tray: 5.5" x 8.5" to 13" x 19.2"; Custom Size: 3.94" x 5.5" to 13" x 19.2"
<b>Paper Weight</b>	Trays 1 – 3: 14 lb. Bond – 95 lb. Cover (52 – 256 g/m <sup>2</sup> ) Trays 4 – 5 with optional A4/LT LCT: 14 lb. Bond – 80 lb. Cover (52 – 216 g/m <sup>2</sup> ) Tray 6 with optional A4/LT LCT: 14 lb. Bond – 60 lb. Cover (52 – 163 g/m <sup>2</sup> ) Trays 4 and 6 with optional A3/DLT LCT: 14 lb. Bond – 95 lb. Cover (52 – 256 g/m <sup>2</sup> ) Tray 5 with optional A3/DLT LCT: 11 lb. Bond – 110 lb. Cover (40 – 300 g/m <sup>2</sup> ) Vacuum-Feed LCIT: 11 lb. Bond – 130 lb. Cover (40 – 350 g/m <sup>2</sup> ) simplex; 14 lb. Bond – 110 lb. Cover (52 – 300 g/m <sup>2</sup> ) duplex Bypass Tray: 14 lb. Bond – 80 lb. Cover (52 – 216 g/m <sup>2</sup> ) Finisher: 3,000 + 250 sheets Booklet Finisher: 2,500 + 250 sheets Stacker: 5,000 + 250 sheets
<b>Output Capacity</b>	12.6" x 18.9" (320 x 480 mm)
<b>Max. Print Area</b>	Plain, Recycled, Colored, Letterhead, Preprinted, Prepunched, Bond, Card, OHP*, Tab*, Label*, Gloss*, Matte*, Envelope*, NCR*
<b>Paper Types</b>	

<b>Magnification</b>	7 reduction and 5 enlargement
<b>Zoom</b>	25% to 400% in 1% increments
<b>Power Requirements</b>	208-240 V, 50/60 Hz, 20 A (dedicated)
<b>Typical Electricity Consumption (TEC)**</b>	Pro 8210: 14.0 kWh/wk Pro 8220: 17.5 kWh/wk Pro 8220s: 17.4 kWh/wk
<b>Max. Power Consumption</b>	Pro 8210s/8220s: 3,400 W Pro 8210/8220: 3,600 W
<b>Dimensions (WxDxH)</b>	45" x 35.4" x 45.1" (1,141 x 900 x 1,146 mm)
<b>Weight</b>	Pro 8210s/8220s: 937 lbs. (425 kg) Pro 8210/8220: 904 lbs. (410 kg)
<b>ENERGY STAR</b>	Certified
<b>EPEAT</b>	Gold Rated

\*Via optional paper sources  
\*\*Typical Electricity Consumption by ENERGY STAR program.

### Copier Features (Pro 8210s/8220s only)

Duplex, Simplified Display, Auto Paper Selection, Auto Reduce/Enlarge, Auto Start, Auto Tray Switching, Auto Image Density, User Codes (1,000), Job Programs (25), Electronic Sort/Stack, Image Rotation, Interrupt Copy, User Tools, Job Presets, Book/Series/Combine Copying, Cover/Chapter/Slip Sheet, Tabs, Sample Copy, Stamps/Numbering, Bates Numbering, Shift/Erase/Margin Adjustment, Customizable Home Screen, Import/Export of Preference Settings, Eco-Friendly Indicator, Power On/Off Timer, Energy Saver, Weekly Timer, External USB Keyboard Support, MFP Browser for Web Image Monitor and @Remote, Copy Reservation (8), A3/DLT Counter, Mixed Originals/ Batch Mode

### Security Features

Data Encryption (Address Book, Authentication Password, SSL Communication, S/MIME, IPsec Communication, HDD), User Authentication (Windows®, LDAP, Basic, User Code, 802.1x Wired), Network Protocol On/Off, Mask Type for Data Security, Data Security Unit Option, IP Filtering, Unauthenticated Copy/Print Control, Quota Setting, SMTP over SSL, Mandatory Security Information Print (Compulsory Security Stamp)

### Printer Specifications

<b>CPU</b>	Intel® Celeron® Processor P4505 – 1.86 GHz
<b>RAM</b>	2 GB
<b>HDD</b>	640 GB (320 x 2) HDD
<b>Max Print Resolution</b>	1200 x 4800 dpi via VCSEL
<b>Standard Interfaces</b>	Ethernet (1000BASE-T/100BASE-TX/10Base-TX), USB 2.0 Type A x 3/Type B, SD slot
<b>Optional Interfaces</b>	IEEE 1284/ECP, IEEE802.11a/b/g/n, Bluetooth
<b>Network Protocol</b>	TCP/IP (IPv4, IPv6), IPX/SPX
<b>Network Operating Systems</b>	Windows Vista/7/8/8.1/10/Server 2008/Server 2008R2/Server 2012/Server 2012R2; NetWare 6.5; UNIX Sun Solaris 9/10, HP-UX 11.x/11i v2/11i v3, SCO OpenServer 5.0.7/6.0, RedHat Linux Enterprise V4/V5/V6, IBM AIX 5L V5.3/V6.1/V7.1; Novell Netware 6.5 or later; Citrix Presentation Server 4.5; Citrix XenApp 5.0; Mac OS X 10.5 or later; SAP R/3; NPDS Gateway; IBM iSeries AS/400 using OS/400 Host Print Transform
<b>Print Drivers</b>	Standard: PCL5c, PCL6 (XL), PDF Optional for Pro 8200s only: Adobe PS3, Genuine IPDS
<b>Fonts</b>	PCL: 45 scalable + 13 international; PDF: 136; IPDS: 108 (optional)
<b>Printer Features</b>	Send to Document Server, Sample/Locked/ Hold/Stored/Scheduled Print, Store and Print, Layout (N-up), Banner Page Print,

PDF Direct Print, Mail to Print, Classification Code, Bonjour Support, Windows Active Directory Support, DDNS Support, PCL Resident Font Adoption, Tray Parameter Change from Web Image Monitor, 1200 dpi Support, Mobile Driver, WS Print, Wireless LAN Interface Option, Media Direct Print (Print from USB/SD), Auto Job Promotion, AirPrint® Support, Poster Print, WPS (Wi-Fi Protected Setup)

### Fiery EB-34 Controller

<b>EFI Platform Configuration</b>	FS200 Pro External
<b>Memory</b>	4 GB
<b>CPU</b>	Intel Processor G850 2.9 Ghz
<b>Host Interface</b>	Ethernet 1000/100/10Base-T x 2
<b>HDD</b>	500 GB
<b>Operating System</b>	Windows 8.1 Professional For Embedded Systems x64
<b>Network Protocol</b>	TCP/IP (IPv4, IPv6), SMB
<b>Printer Description Language</b>	PS3, PCL 5e, PCL 6
<b>Max. Resolution</b>	1200 dpi
<b>Fonts</b>	PS3 138, PCL 81
<b>Operation Panel Utilities</b>	Via touch panel display on printer Standard: EFI Driver, Command Workstation, Webtools, Hot Folders Optional Fiery SeeQuence Impose, Fiery SeeQuence Compose, Image Viewer for Black and White, EFI Spectrophotometer ES-2000, FACI Furniture, External Secure HDD Kit

### Scanner Specifications (Pro 8210s/8220s only)

<b>Scanning Resolution</b>	Up to 600 dpi (TWAIN: 1200 dpi)
<b>Scan Area</b>	Up to 11.7" x 17" (297 x 432 mm)
<b>Scan Speed (LTR/A4)</b>	Simplex: 120 ipm; Duplex: 220 ipm (B&W and Full-color)
<b>Output Format</b>	Single Page: TIFF/JPEG/PDF/High Compression PDF
<b>Interface Support</b>	Multi Page: TIFF/PDF/High Compression PDF Ethernet (1000BASE-T/100BASE-TX/10Base-T), USB 2.0 Type A, SD card slot, Optional Wireless LAN (IEEE802.11 a/b/g/n)
<b>Authentication</b>	SMTP/POP before SMTP
<b>Scanner Features</b>	Scan to USB/SD, WS Scanner, Scan-to-Email/Folder/SMB/FTP/URL/NCP/PDF/A/ Digitally Signed PDF/Searchable PDF, TWAIN Scanning, Scanned File Naming, LDAP Support, Universal Send, Distributed Scan Management, Preview Before Transmission, PDF Encryption, Drop Out Color Send, B&W/FC Photo, B&W/FC Text, Auto Color Selection, Auto Density, Auto Size Detection, Image Rotation, Mixed Size/SADF/Batch Mode, Reduce and Enlarge, Split Scan, JBIG2 Compression Support

### Document Server Specifications

<b>Max. Stored Documents</b>	15,000
<b>Max. Pages per Document</b>	1,000
<b>Max. Stored Pages</b>	15,000
<b>Folder Management</b>	With password, up to 200 personal folders



# RICOH Pro 8210s/8220s/8210/8220

SYSTEM SPECIFICATIONS



## Accessories

**LCIT RT5100 Vacuum Feed Large Capacity Input Tray**  
**Paper Capacity** 4,400 sheets (2,200 x 2)  
**Paper Size** A5 (LEF)/5.5" x 8.5" - 13" x 19.2"  
**Paper Weight** 11 lb. Bond - 130 lb. Cover (40 - 350 g/m<sup>2</sup>)  
**Power Consumption** Less than 860 W  
**Power Supply** 100 - 127 V  
**Dimensions (WxDxH)** 41.5" x 28.7" x 39.4" (1,054 x 730 x 1,000 mm)  
**Weight** Less than 484 lbs. (220 kg)

**BUS010 Bridge Unit for LCIT RT5100**  
**Paper Size** Width: 3.94" to 13" (210 mm to 330.2 mm)  
 Length: 5.5" to 19.2" (420 mm x 487.7 mm)  
 11 lb. Bond - 130 lb. Cover (40 - 350 g/m<sup>2</sup>)  
**Paper Weight** From LCIT RT5100  
**Dimensions (WxDxH)** 13" x 28.7" x 39.4" (330 x 730 x 1,000 mm)  
**Weight** Less than 132 lbs. (60 kg)

**RT5080 A3/DLT Large Capacity Tray (LCT)**  
**Paper Capacity** 4,400 sheets  
**Paper Size** 5.5" x 8.5" - 13" x 19.2"  
**Paper Weight** 11 lb. Bond - 110 lb. Cover (40 - 300 g/m<sup>2</sup>)  
**Dimensions (WxDxH)** 34" x 28.7" x 39.4" (865 x 730 x 1,000 mm)  
**Weight** 407 lbs. (185 kg)

**RT5070 A4/LT Large Capacity Tray (LCT)**  
**Paper Capacity** 5,000 sheets  
**Paper Size** 5.5" x 8.5" - 8.5" x 11"  
**Paper Weight** Trays 4 - 5: 14 lb. Bond - 80 lb. Cover (52 - 216 g/m<sup>2</sup>)  
 Tray 6: 14 lb. Bond - 60 lb. Cover (52 - 163 g/m<sup>2</sup>)  
**Dimensions (WxDxH)** 21.3" x 28.7" x 39.4" (540 x 730 x 1,000 mm)  
**Weight** 233.2 lbs. (106 kg)

**BY5010 Multi Bypass Tray**  
**Paper Capacity** 550 sheets  
**Paper Size** 5.5" x 8.5" - 13" x 19.2"  
**Paper Weight** 14 lb. Bond - 80 lb. Cover (52 - 216 g/m<sup>2</sup>)  
**Dimensions (WxDxH)** 27.2" x 22.1" x 8.3" (690 x 561 x 210 mm)  
**Weight** 44 lbs. (20 kg)

**Multi Bypass Banner Sheet Tray Type S3**  
**Paper Capacity** 500 sheets  
**Paper Size** 5.5" x 8.5" - 13" x 19.2"  
 Custom Size: 3.94" x 5.5" - 13" x 27.5"  
**Paper Weight** 14 lb. Bond - 80 lb. Cover (52 - 216 g/m<sup>2</sup>)  
**Dimensions (WxDxH)** 42.9" x 22.1" x 8.3" (1,090 x 561 x 210 mm) when attached to BY5010  
**Weight** 20.9 lbs. (9.5 kg)

**TK5010 A3/DLT Tray Unit**  
**Paper Capacity** 1,000 sheets  
**Paper Size** Up to 11" x 17"  
**Dimensions (WxDxH)** 19.5" x 20.9" x 6.9" (495 x 530 x 175 mm)  
**Weight** 22 lbs. (10 kg)

**CI5030 2 Source Cover Interposer**  
**Paper Size** 5.5" x 8.5" - 13" x 19.2"  
**Paper Weight** 17 lb. Bond - 80 lb. Cover (64 - 216 g/m<sup>2</sup>)  
**Stack Capacity** 200 sheets x 2 trays  
**Dimensions (WxDxH)** 21.2" x 28.7" x 50.8" (540 x 730 x 1,290 mm)  
**Weight** 99 lbs. (45 kg)

**SK5030 High Capacity Stacker**  
**Paper Capacity** 5,000 sheets (SRA3, A4, LT size); Proof Tray: 250 sheets  
**Output Jogger** Standard  
**Rollaway Cart** Standard (optional additional carts available)  
**Power Consumption** Less than 120 W  
**Power Supply** 120 - 127 V, 50/60 Hz, 2A  
**Dimensions (WxDxH)** 35.4" x 28.7" x 39.8" (900 x 730 x 1,010 mm)  
**Weight** Stacker: 264 lbs. (120 kg); Roll Away Cart: 33 lbs. (15 kg)

**SR5050 3,000-Sheet Finisher with 100-Sheet Stapler**  
**Capacity (Proof Tray)** 250 sheets (8.5" x 11" or smaller)  
 50 sheets (8.5" x 14" or larger)

**Capacity (Shift Tray)** 8.5" x 11" - 3,000 sheets  
 8.5" x 14" - 11" x 17" - 1,500 sheets  
 12" x 18" - 13" x 19.2" - 1,000 sheets  
**Paper Size** 5.5" x 8.5" - 13" x 19.2"  
**Paper Weight** Proof Tray: 14 lb. Bond - 80 lb. Cover (52 - 216 g/m<sup>2</sup>)  
 Shift Tray: 11 lb. Bond - 130 lb. Cover (40 - 350 g/m<sup>2</sup>)  
**Output Jogger** Standard  
**Staple** 8.5" x 11" - 2 to 100 sheets  
 8.5" x 14" - 11" x 17" - 2 to 50 sheets  
**Staple Position** Top, Bottom, 2 Staples, Top Slant  
**Dimensions (WxDxH)** 39.2" x 28.7" x 44.3" (996 x 730 x 1,126 mm)  
**Weight** 246 lbs. (112 kg)

**SR5060 2,500-Sheet Booklet Finisher**  
**Capacity (Proof Tray)** 250 sheets (8.5" x 11" or smaller)  
 50 sheets (8.5" x 14" or larger)  
**Capacity (Shift Tray)** 8.5" x 11" - 2,500 sheets  
 8.5" x 14" - 11" x 17" - 1,500 sheets  
 12" x 18" - 13" x 19.2" - 1,000 sheets  
**Paper Size** Proof Tray: 5.5" x 8.5" - 13" x 19.2"  
 Shift Tray: 5.5" x 5.5" - 13" x 19.2"  
**Output Jogger** Standard  
**Paper Weight** Proof Tray: 14 lb. Bond - 80 lb. Cover (52 - 216 g/m<sup>2</sup>)  
 Shift Tray: 11 lb. Bond - 130 lb. Cover (40 - 350 g/m<sup>2</sup>)  
**Staple** 8.5" x 11" - 2 to 100 sheets  
 8.5" x 14" - 11" x 17" - 2 to 50 sheets  
**Staple Position** Top, Bottom, 2 Staples, Top Slant  
**Saddle Stitch Staple** 8.5" x 11" - 13" x 19.2" - 20 sheets;  
 Center 2 Position  
**Dimensions (WxDxH)** 39.2" x 28.7" x 44.3" (996 x 730 x 1,126 mm)  
**Weight** 246 lbs. (112 kg)

**TR5040 Booklet Trimmer**  
**Trimming Type** One Side Edge  
**Trimming Capacity** 1 to 20 sheets (2 to 40 pages after folding)  
**Paper Size** Up to 13" x 19.2"  
**Stack Capacity** Up to 60 sets  
**Limitless Stack** Yes  
**Dimensions (WxDxH)** 43.9" x 23.3" x 21.8" (1,115 x 591 x 555 mm)  
**Weight** 165 lbs. (75 kg)

**FD5020 Multi-Folding Unit**  
**Folding Type** Single Sheet Mode: Z-Fold, Half-Fold/Print inside, Half-Fold/Print outside, Letter Fold-in/Print inside, Letter Fold-out, Double Parallel/Print inside, Double Parallel/Print outside, Gate-Fold/Print inside, Gate-Fold/Print outside  
 Multiple Sheets Mode: Half-Fold/Print inside, Half-Fold/Print outside, Letter Fold-in/Print inside, Letter Fold-in/Print outside, Letter Fold-out  
**Paper Size** Single Sheet Mode: Z folding: 8.5" x 11" - 12" x 18"; Half folding: 8.5" x 11" - 13" x 19.2"; Letter folding: 8.5" x 11" Multiple Sheets Mode: Double Parallel folding: 8.5" x 11" - 12" x 18"; Gate folding: 8.5" x 11" - 12" x 18"; Half folding: 8.5" x 11" - 13" x 19.2"; Letter Fold-out: 8.5" x 11"; Letter Fold-in: 8.5" x 11"  
**Dimensions (WxDxH)** 18.5" x 28.7" x 39.4" (470 x 730 x 1,000 mm)  
**Weight** 203 lbs. (92 kg)

**RB5020 Ring Binder**  
**Paper Size** 8.5" x 11"/A4  
**Paper Weight** 17 lb. Bond - 80 lb. Cover (64 - 216 g/m<sup>2</sup>)  
**Stack Capacity** Binding Mode: 11 sets; Punching Mode: 100 sheets  
**Ring Bind Capacity** 2 to 100 sheets  
**Number of Holes** LTR - 21, A4 - 23  
**Ring Supply** Black or White, Up to 50 or 100 sheets  
**Tab Stock** Supported  
**Dimensions (WxDxH)** 34.2" x 28.7" x 39.8" (870 x 730 x 1,010 mm)  
**Weight** 308 lbs. (140 kg)

**GB5010 Perfect Binder**  
**Booklet Size** Width: 7.9" x 11.7" (201 - 297 mm);  
 Length: 5.5" x 8.5" (140 - 216 mm)  
 Less than 1" (23 mm)  
**Booklet Thickness** 200 sheets  
**Body Page Capacity** 3 Edges, 1 Edge, None  
**Cutting Directions** Body Pages: 17 lb. Bond - 60 lb. Cover (64 - 163 g/m<sup>2</sup>)  
 Cover Pages: 24 lb. Bond - 110 lb. Cover (90 - 300 g/m<sup>2</sup>)  
**Paper Weight** 50 sheets: 13; 100 sheets: 7; 200 sheets: 4  
**Stack Capacity/Booklet Dimensions (WxDxH)** 42.9" x 31.1" x 54.6" (1,090 x 791 x 1,387 mm)  
**Weight** 770 lbs. (350 kg)

**DU5050 Decurl Unit**  
**Decurl Function** Three steps pressure adjustment (from operation panel)  
**Paper Weight** 11 lb. Bond - 130 lb. Cover (40 - 350 g/m<sup>2</sup>)  
**Dimensions (WxDxH)** 2.8" x 20" x 7.1" (71 x 509 x 181 mm)  
**Weight** 11 lbs. (5 kg)

**HCI3500 Plockmatic High Capacity Interposer**  
**Number of Trays** 2  
**Paper Size** 4.7" x 8.3" - 13.8" x 26" (120 x 210 mm - 350 x 660 mm)  
**Paper Weight** 18 lb. Bond - 130 lb. Cover (65 - 350 g/m<sup>2</sup>)  
**Paper Capacity** 3,500 sheets  
**Power Supply** 115 V, 60 Hz  
**Dimensions (WxDxH)** 47" x 28" x 43" (1,200 x 700 x 1,100 mm)  
**Weight** 551 lbs. (250 kg)

**PBM350/PBM500 Plockmatic Booklet Maker**  
**Paper Size** 8.5" x 11" - 12" x 18"  
**Paper Weight** 17 lb. Bond - 100 lb. Cover (64 - 300 g/m<sup>2</sup>)  
**Set Size** PBM350 - 2-35 sheets (20 lb. Bond/80 g/m<sup>2</sup>)  
 PBM500 - 2-50 sheets (20 lb. Bond/80 g/m<sup>2</sup>)  
**Power Supply** 115 V, 60 Hz  
**Dimensions (WxDxH)** 55.9" x 35.4" x 27.6" (1,420 x 970 x 700 mm)  
**Weight** 297 lbs. (135 kg)

**GBC StreamPunch Ultra**  
**Punched Paper Sizes** 5.5" x 8.5", 8.5" x 11", 8.5" x 14", 11" x 17"  
**Punched Media Weight Range** 20 lb. Bond - 110 lb. Cover (up to 300 g/m<sup>2</sup>)  
**Tab Punching** Yes  
**"Two-Up" Punching** Yes  
**Power Supply** 115 V, 60 Hz  
**Dimensions (WxDxH)** 17.5" x 28.7" x 39.4" (445 x 730 x 1,000 mm)  
**Weight** 220 lbs. (100 kg)

**RIP Interface Box Type S3** (For third-party finishing peripherals only)  
**Dimensions (WxDxH)** 10.4" x 9.9" x 5.3" (265 x 253 x 136 mm)  
**Weight** 1.2 lbs. (0.55 kg)

## Additional Accessories

IPDS Unit Type S8 for Printer Models, PostScript3 Unit Type S8 for Printer Models, PostScript3 Unit Type S7 for MFP Models, IPDS Unit Type S7 for MFP Models, ADF Double Feed Detection, Transit Pass Unit for Perfect Binder Type S1, Cover Interposer Tray for Perfect Binder Type S1, Multi Bypass Attachment Kit for RT5100 LCIT Type S3, Roll-Away Cart Type S010, Punch Unit PU5020, Optional Connector Interface Unit Type M12, Copy Connector Type 3260, IEEE 802.11a/b/g/n Interface Unit Type M2, OCR Unit Type M2, Copy Data Security Unit Type G, File Format Converter Type E, IEEE 1284 Interface Board Type A

## Supply Yields

**Toner** 82,000 per bottle\*  
**Drum** 2,500K images/unit  
**Developer** 860K prints/bag

\*Based on 6% chart of Ricoh A4 LEF test chart under normal operating conditions.

For maximum performance and yield we recommend using genuine Ricoh parts and supplies.

Specifications subject to change without notice.

**RICOH**  
 imagine. change.

www.ricoh-usa.com